

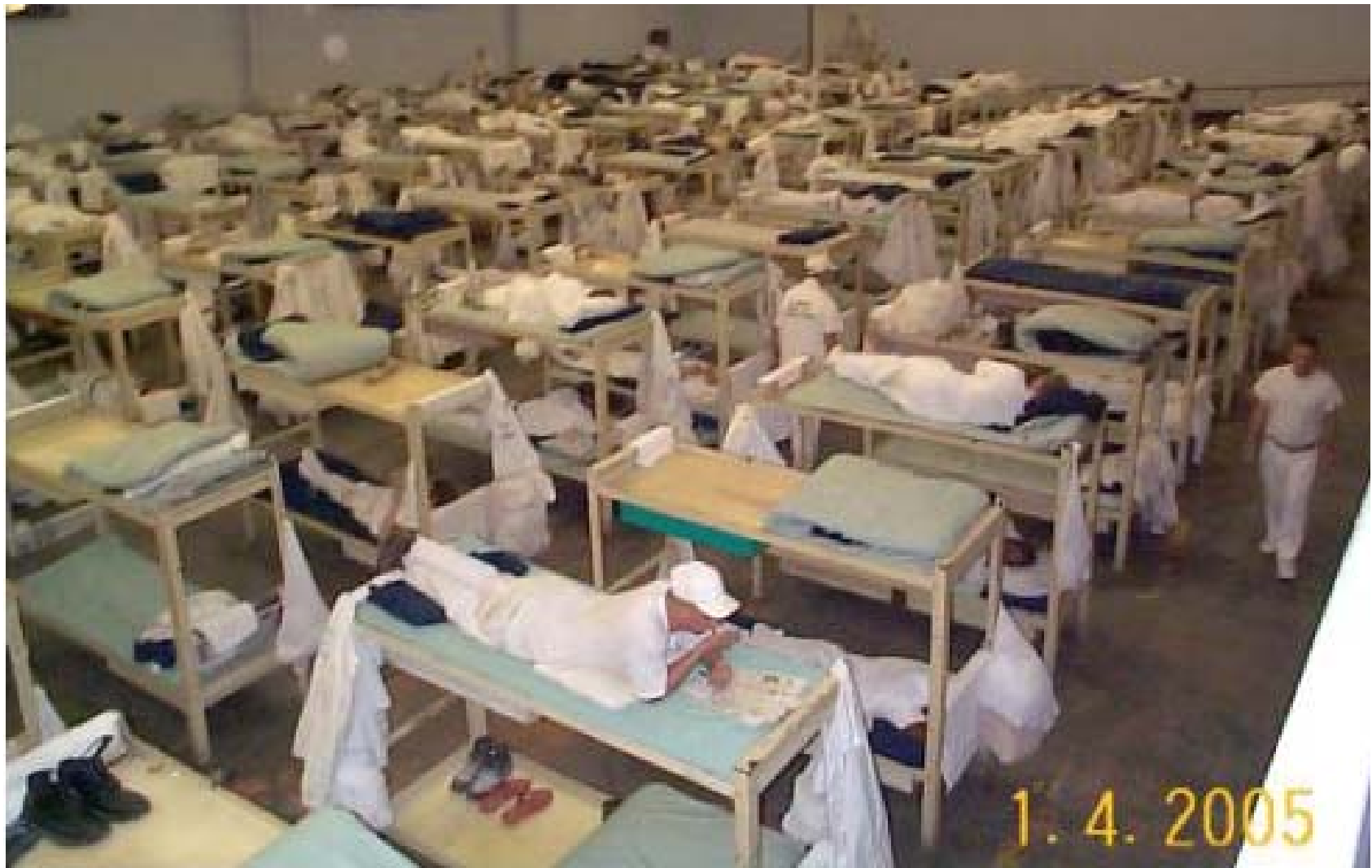
Alabama Department of Corrections

Budget Briefing



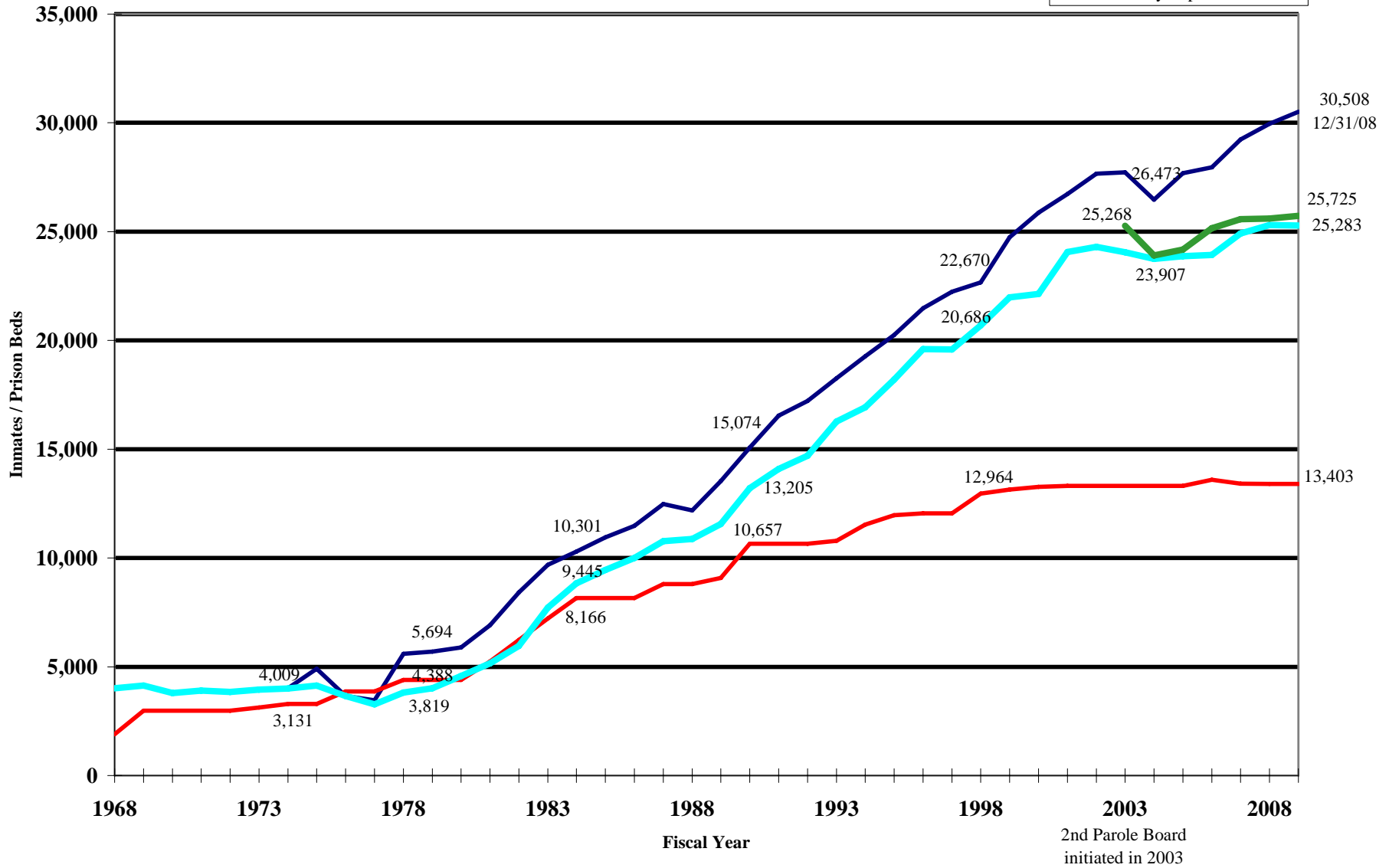
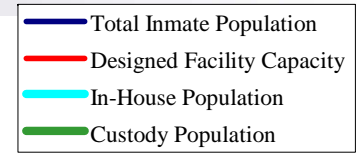
Richard F. Allen
Commissioner

Typical Alabama DOC Dorm





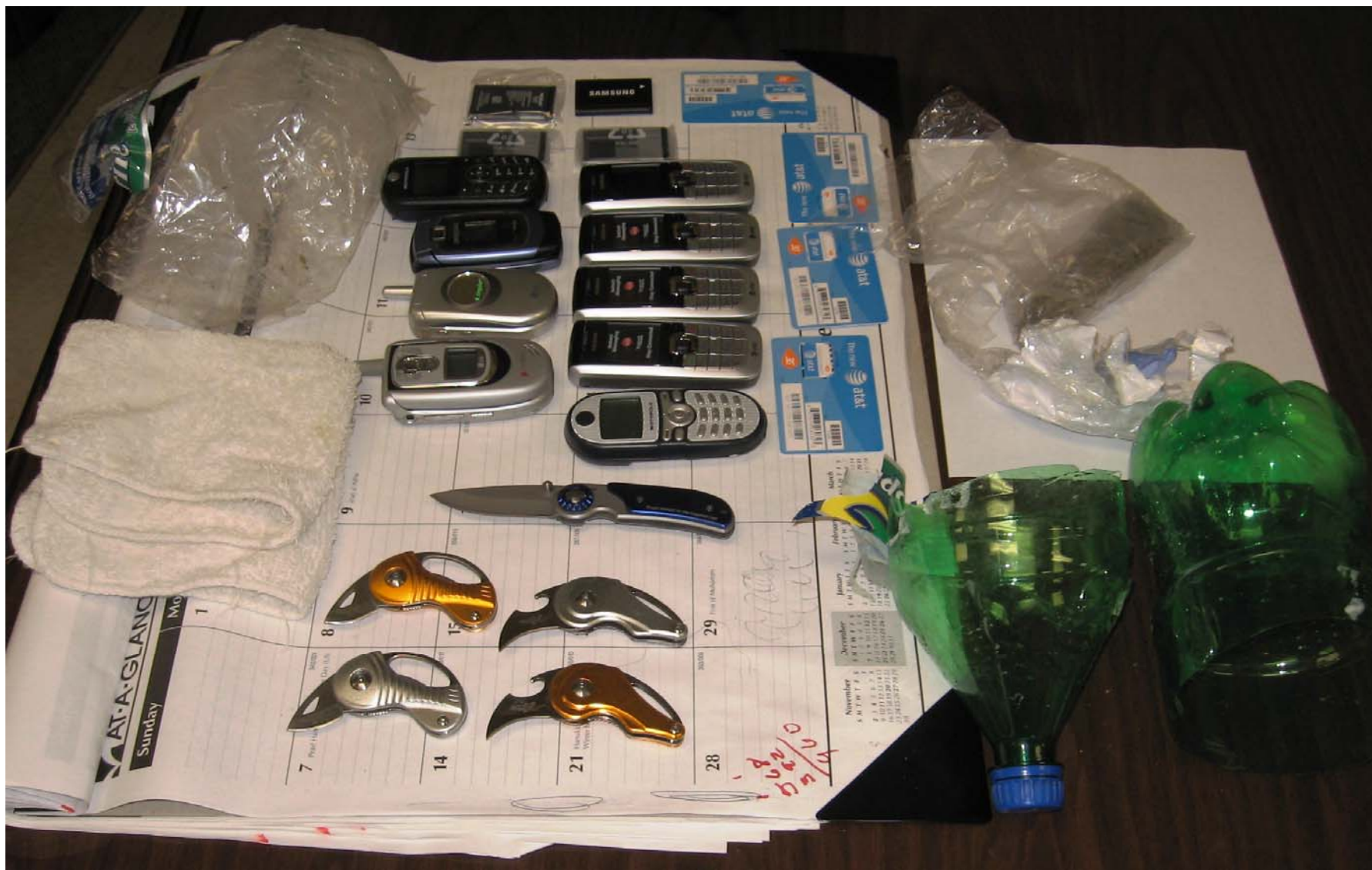
Historical Prison Population / System Capacity FY68 to FY09 Current



1976-1990 opened 10 major facilities and 9 WR/CWC

1991-1998 opened 1 major facility and 3 WR/CWC.

Ramifications of Over-crowding





Primary Reasons for Population Growth

- 1. Tough on Crime Policies**
- 2. Substance Abuse Explosion**
- 3. Mental Health Reforms**



Tough on Crime Examples


- 1. Total Alabama Felonies 536**
- 2. New Felonies created Since 2001 67**
- 3. Misdemeanors Upgraded Since 2001 8**

Alabama Inmates by Crime

Criminal Offenses for Received Inmates During Fiscal Year 2008

Possession Controlled Substance	2,212
Distribution Controlled Substance	782
Possession Marijuana I	445
Manufacture Controlled Substance	292
Att. To Commit Cont. Sub/Involve B Felony	63
Trafficking Cocaine 28-500 grams	80
Trafficking Cannabis 2.2-100 lbs	58
Trafficking Methamphetamines	43
Possession Chemicals/Intent to Manufacture	13
Obtain Controlled Substance Fraudulently	18

Drug Offenses	4,073
All Other Offenses	7,656
Total	11,729



Drug Offenses
Account For More
Than 34.7% of New
Convictions in FY08.



ADOC Mental Health Issues

- **1971**

State's two mental facilities housed more than 8,000 mentally ill/retarded individuals

Alabama prisons housed approx. 3,904 inmates, only about 200 of whom were thought to be mentally ill

- **2008**

The Dept. of Mental Health & Retardation has about 860 beds, including 114 for those that are judged “not guilty by reason of insanity”

Alabama prisons house about 25,500 inmates – with 5,000+ in need of MH treatment

In Alabama 36% of women and 20% of men incarcerated have known mental health difficulties



How We Can Accommodate Population Growth

- ~~Build New Prisons~~
- Cram more inmates into existing space
- Try to control or eliminate growth



New Beds Created in ADOC

Medium Security

- **300** Bullock Mental Health Unit July 2006
- **175** Montgomery Women's Facility October 2007
- **120** Easterling Correctional Facility December 2007
- **300** Limestone Correctional Facility November 2008

Other Security Levels

- **125** Montgomery Women's Facility October 2007
- **36** Mobile Work Release February 2008
- **32** Hamilton Work Release May 2008
- **300** Decatur Work Release January 2009

1263 New beds in system since July 2006 - Cost Est. \$6.5 M

COMPARE

1400 Bed federal women's prison in Aliceville- Cost Est. \$224 M



How to Reduce or Eliminate Growth

- A. Sentencing Reform -- Effective October 2006
- B. Community Corrections



ADOC Community Corrections Programs

1. Growth of CCP Counties

FY 2006 = 31

FY 2008 = 45

2. Total CCP New Diversions Per Year

FY 2006 = 1108

FY 2007 = 1354

FY 2008 = 1615

3. Average New Diversions Per Month

FY 2006 = 92

FY 2007 = 112

FY 2008 = 135

4. Comparison of Inmate Cost

In-house \$40 vs. CCP \$15

In-house \$40 x 365 = \$14,600

CCP \$15 x 365 = \$5475



How to Reduce or Eliminate Growth

- A. Sentencing Reform -- Effective October 2006
- B. Community Corrections
- C. Pardons and Paroles
- D. Supervised Re-entry Program



Supervised Re-entry Program

- Counteract the abrupt release of inmates
 - The typical \$10 and a bus ticket is a recipe for recidivism and does little to protect the public
- ADOC control of in-house population
- Reduction of recidivism by providing a program for the inmate to successfully reintegrate
- SRP placements since program inception 1,690 Avg. 97 per month includes 466 females between 6/1/2007 – 1/9/2009



How to Reduce or Eliminate Growth

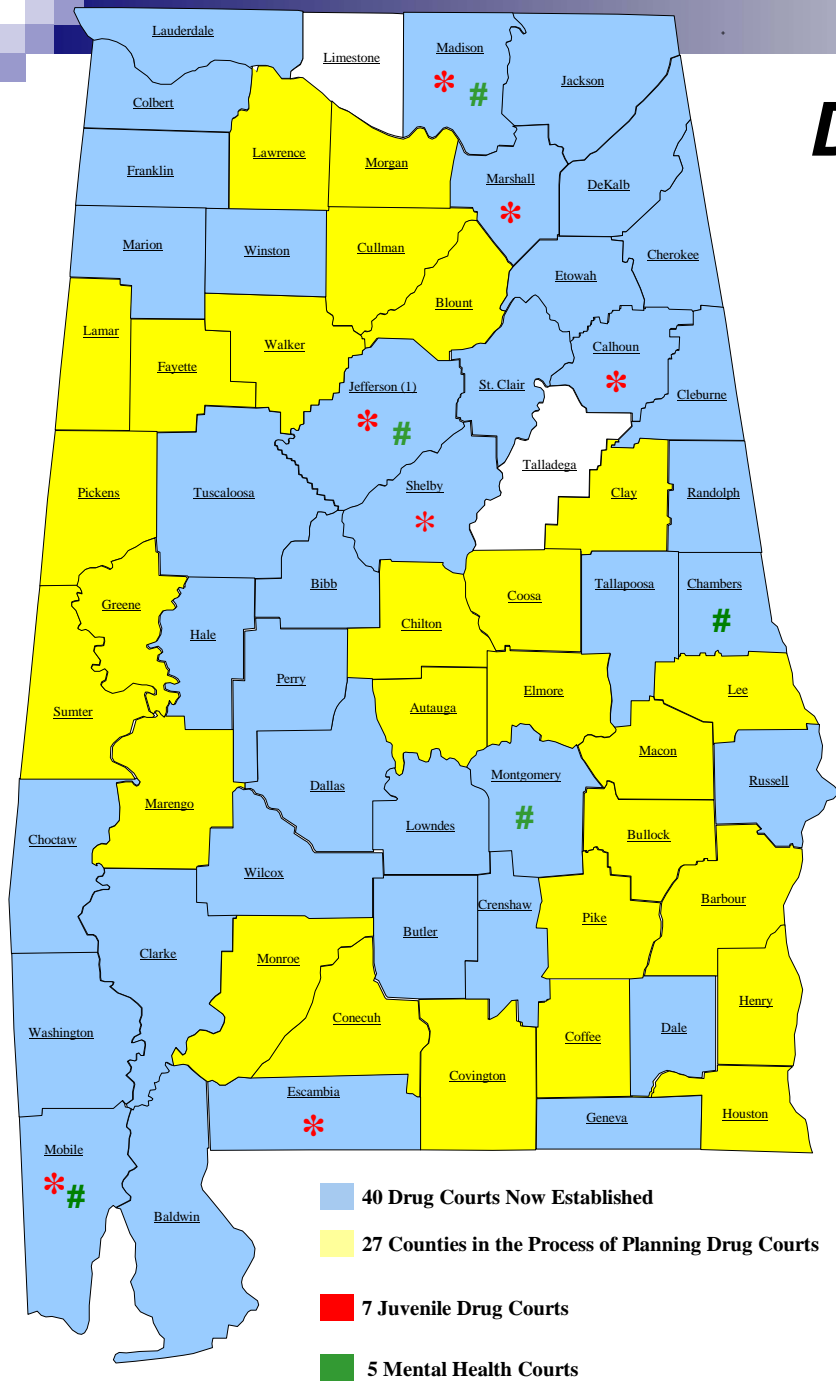
- A. Sentencing Reform -- Effective October 2006
- B. Community Corrections
- C. Requested Pardons and Parole to Establish Goals
- D. Supervised Re-entry Program
- E. Modernize Classification System / Gender Specific for Women
- F. Pardon and Parole Transition Centers (Life Tech)



How to Reduce or Eliminate Growth

- A. Sentencing Reform -- Effective October 2006
- B. Community Corrections
- C. Requested Pardons and Parole to Establish Goals
- D. Supervised Re-entry Program
- E. Modernize Classification System / Gender Specific for Women
- F. Pardon and Parole Transition Centers (Life Tech)
- G. Drug Courts / Mental Health Courts

Drug / Mental Health Courts



Blue = 40 Drug Courts now established

Yellow = 27 Counties in the process of planning Drug Courts

Red = 7 Juvenile Drug Courts

Green = 5 Mental Health Courts



How to Live Within the Budget!

H. Technical Violator Center

I. Review of Split Sentences

J. Our Re-entry Program



ADOC Re-entry Initiatives

- Borrowed employee from Alabama Dept. of Public Health
- Identified multiple Community, State, and Federal agencies by county
- Identified multiple halfway houses and support groups by county
- Pre Release Programs – re-entry planning targets inmates who are within 30 – 90 days of a tentative release date



How to Live Within the Budget!

H. Technical Violator Center

I. Review of Split Sentences

J. Our Re-entry Program

K. Governor's Re-entry Initiatives

L. Alabama Therapeutic Education Facility – Columbiana, AL.
400 Therapeutic Beds Devoted to
Addiction Therapy
Behavioral Modification
Job Skills Training

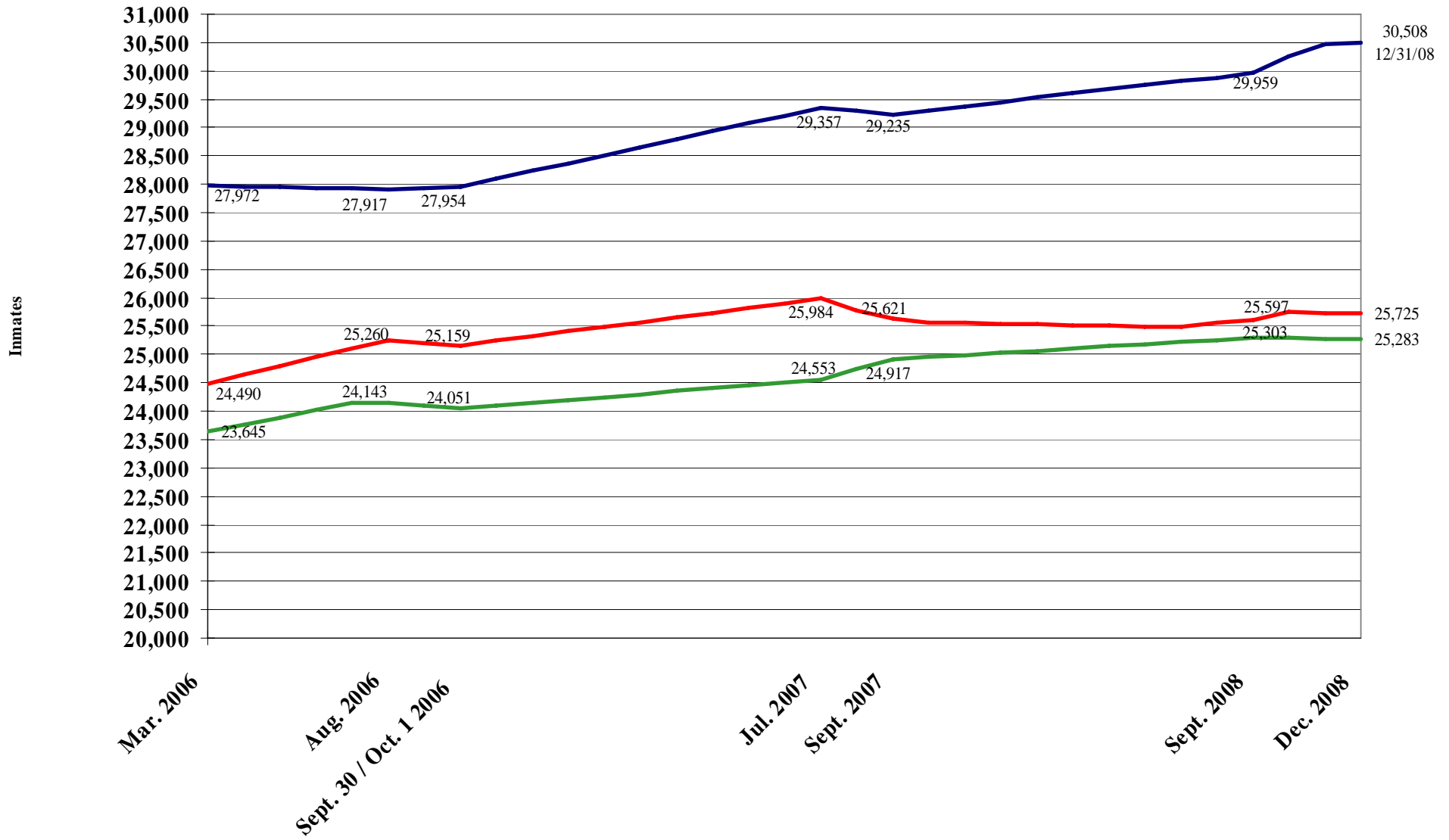
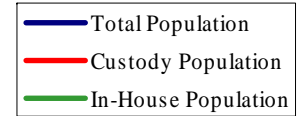


Governor's Faith Based Re-entry Initiative

- Created CPR Network – Community Partnerships for Re-entry and Recovery
- Held statewide and regional programs to enlist faith based programs and individuals, April 2008 and continuing
- July 2008 – 985 organizations or individuals have volunteered to work to aid inmates re-enter society



Current Growth Rate March 2006 to Date





Personnel Shortages / Recruiting and Retention

- Advertising awareness campaign utilizing television, radio, internet, job fairs & more. Goal, 450 CO's annually
- April 2006 = 42 Trainees October '08 = 290 Trainees
224 graduated ADOC Academy in 2007
257 graduated ADOC Academy in 2008, most in 6 years
150+ expected in January 2009 class
- 10% pay raise for all security personnel in Governor's Plan 2010



“Where We Stand”

In 1976, Judge Frank Johnson held that Alabama operated, “a prison system that was not otherwise in compliance with constitutional requirements in respect to

over crowding,

classification,

protection from violence,

food service,

educational opportunities,

work opportunities,

physical facilities,

segregation and isolation,

mental health care,

living conditions,

correspondence and visitation,

vocational opportunities,

recreational opportunities,

and staff.”

PUGH v . STATE OF ALABAMA (Locke)
406 F. Supp. 318 (M. D. Ala 1976)



Pew Trust Report

DOC as Percentage of Overall State Budgets

1. Oregon	10.9%	+4.6%
2. Florida	9.3%	+3.6
3. Vermont	9.3%	+5.2
4. – 46.	Omitted	
47. Hawaii	3.8%	+1.3
48. Minnesota	2.7%	+1.0
49. Alabama	2.6%	-2.4
National Avg.	6.8%	+1.8

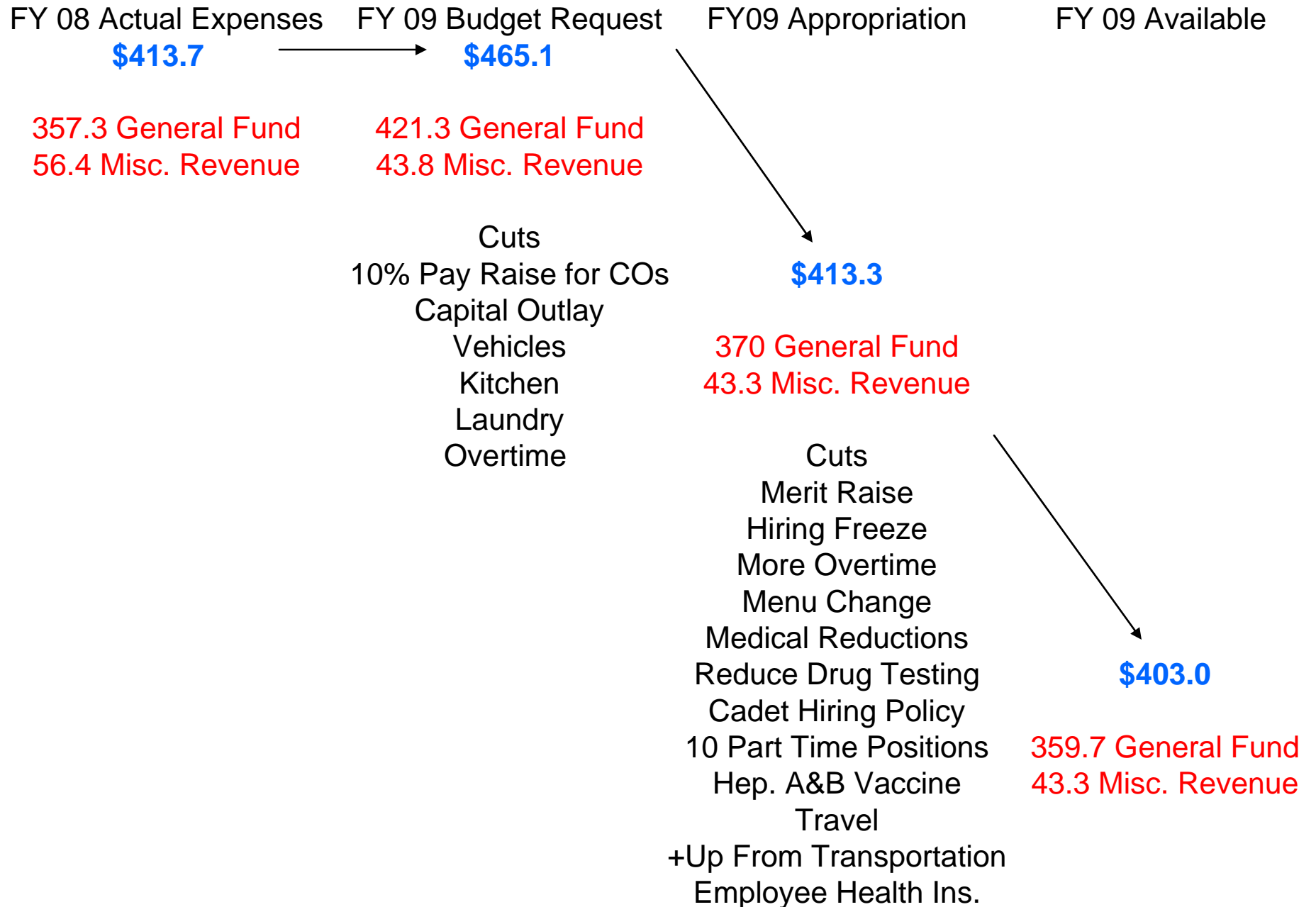
State Inmate Costs FY 2007

Jurisdiction	Avg. Daily Inmate Cost
Massachusetts	\$130.79
Vermont	\$125.00
Rhode Island	\$113.28
Wyoming	\$89.25
New York	\$89.00
Michigan	\$88.47
Connecticut	\$86.09
Nebraska	\$83.07
Colorado	\$78.79
Montana	\$77.87
Iowa	\$72.00
West Virginia	\$69.66
Ohio	\$68.60

Jurisdiction	Avg. Daily Inmate Cost
California	\$61.81
Arizona	\$61.74
Tennessee	\$60.84
Idaho	\$60.56
Kansas	\$60.00
Nevada	\$55.34
Oklahoma	\$55.09
Arkansas	\$54.82
Florida	\$52.90
Kentucky	\$50.60
Texas	\$42.54
Missouri	\$41.21
Alabama	\$39.46

Federal BOP \$68.28

FY 2009 Budget Status



ALABAMA

DEPARTMENT OF CORRECTIONS



Inmates by Custody Level

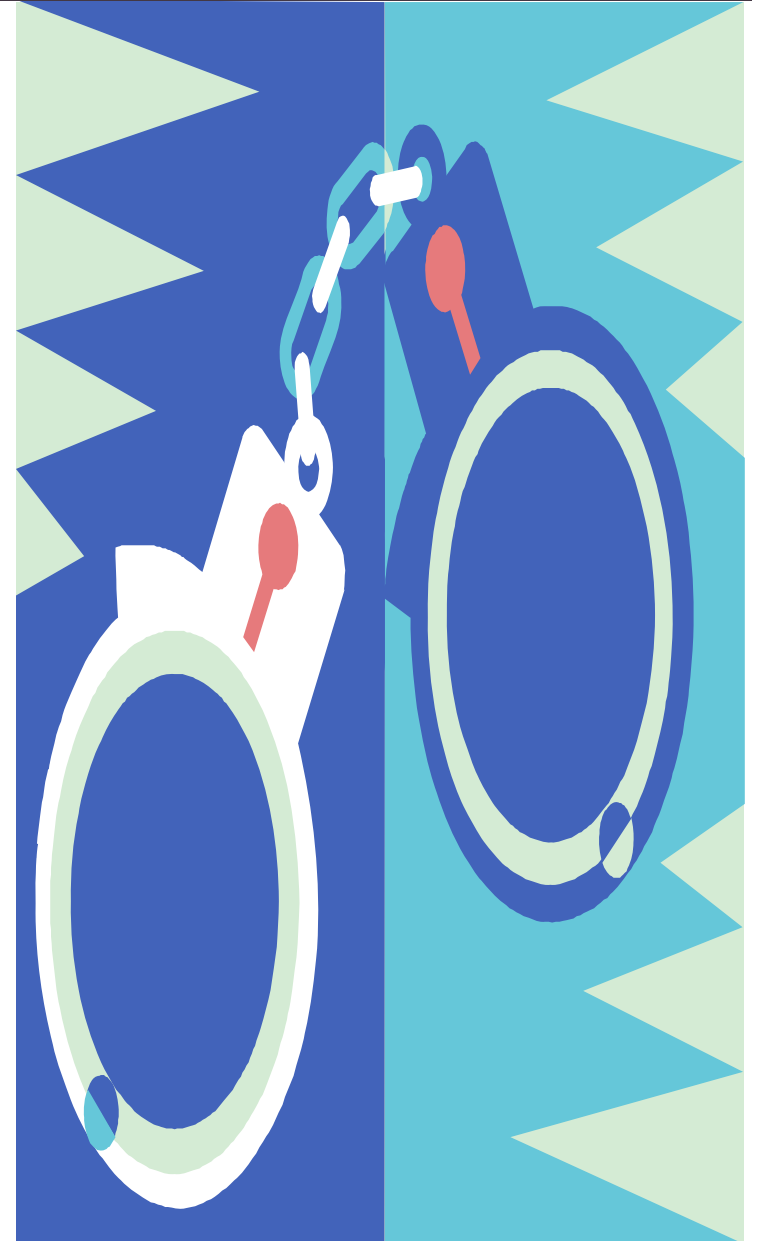
As of 1/12/09

Medium/Higher	
Beds	19,549
Empty	55

County Jail Inmates	
Total	746
Over 30 Days	109

Work Release / CWC		
Beds	2258	1750
Empty	50	208

Contract Beds	Total	Occupied
MALE	400	310
FEMALE	50	46





Other Construction Projects

- **Montgomery Women's Facility**

Constructing a 5,200 sq. ft. building for treatment and educational programs. Scheduled completion date April 09 **\$343,000**

- **St. Clair C. F.**

Construction of a new 21 chair dialysis unit to replace existing 8 chair unit. Scheduled completion date April 09 **\$1.1M**

- **Staton C. F.**

Construction of a new kitchen and dining hall to replace current unit built to serve 480 inmates, current population 1371. Scheduled completion date Jan 09 **\$4.1M**

- **Tutwiler Women's Facility**

Renovation and construction of a Mental Health Unit to comply with Laube Consent Order. Created 45 additional beds. (Tutwiler population cap remains at 700) Completed Nov. 08 **\$2.8M**



Land Sale and Use of Proceeds

		Proceeds	
■	Cattle Ranch Phase I	\$1,625,000	
■	South Union	\$1,000,000	
■	Red Eagle	\$,5,050,000	
■	Cattle Ranch	\$4,450,000	
■	Elmore Hospital	\$ 19,659	
■	Cattle Ranch Phase II	<u>\$5,212,000</u>	
		\$17,356,659	

Use of Proceeds

<u>Capital Construction</u>	\$9,110,151
-----------------------------	-------------

Constructions renovations, 300 bed pre-release dorm at Limestone, 300 bed dorm at Decatur WR, kitchen/dining facility at Staton, roof replacement at Holman and multiple smaller projects.



Land Sale and Use of Proceeds

Use of Proceeds

<u>Capital Equipment</u>	\$2,940,129
--------------------------	-------------

Replace vehicles, kitchen and laundry equipment, replaced obsolete telephone systems, replaced outdated ADOC weapons and computer equipment.

<u>Maintenance and Repair</u>	\$4,500,000
-------------------------------	-------------

General maintenance and repair at all ADOC facilities and equipment.

<u>Miscellaneous</u>	\$806,379
----------------------	-----------

Alabama Therapeutic Education Facility, Land appraisals, surveys, etc.

TOTAL	\$17,356,659
-------	--------------